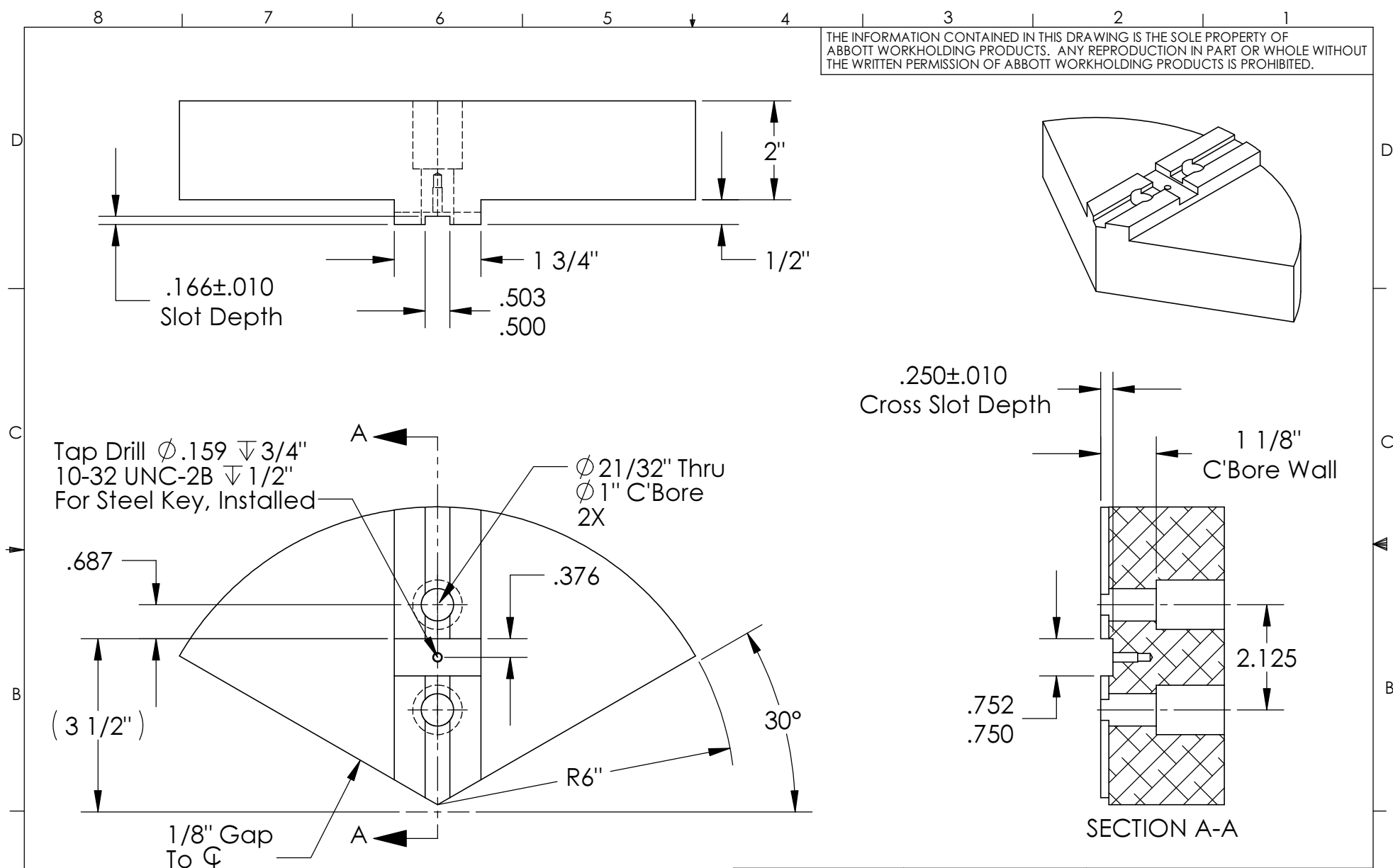


THE INFORMATION CONTAINED IN THIS DRAWING IS THE SOLE PROPERTY OF ABBOTT WORKHOLDING PRODUCTS. ANY REPRODUCTION IN PART OR WHOLE WITHOUT THE WRITTEN PERMISSION OF ABBOTT WORKHOLDING PRODUCTS IS PROHIBITED.



REVISIONS	DATE	BY
Redrawn for billet material		
Pad width changed from 2"	10/15/13	ZGG

UNLESS OTHERWISE SPECIFIED DIMENSIONS ARE IN INCHES TOLERANCES ARE: FRACTIONS DECIMALS ANGLES +/-1/32 .XX+/- .015 +/- 5° .XXX+/- .005 .XXXX±.0005		CAD GENERATED DRAWING, DO NOT MANUALLY UPDATE	
MATERIAL 6061		APPROVALS DRAWN ZGG	DATE 11/04/16
Weight (Pounds) 7.6	STYLE D	CHECKED	
CUSTOMER: Stock		MATERIEL	
		MFG	
		Disposition Released	

Abbott Workholding Products
 430 McCall Road
 Manhattan, KS 66502
 785-776-8555
 785-587-0004 Fax
 800-528-6459
 www.abbottworkholding.com
 engineering@abbottworkholding.com

SIZE A	Part Name TG1210HDP	REV. A
-----------	------------------------	-----------

SCALE 1:2.75 DWG No. TG1210HDP SHEET 1 OF 1